

Breastfeeding & Chestfeeding Support

in Kitsap Co

Whether you are a seasoned parent or just starting on your baby feeding journey, you are warmly invited to join friends, old and new, for support. Attendance while pregnant is encouraged.



Nurturing Expressions
in Poulsbo
weekly drop-in
support group
Fridays. 10-12 am
Led by
Tracey Corey
Lactation Consultant

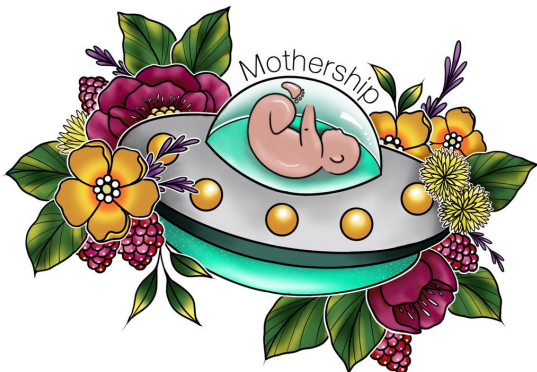
La Leche League
of Central Kitsap
4th Wed of the month
at 10:30 am
Blossom Baby
Boutique in Silverdale
Katie Dunning LC
360-697-3303

Port Orchard
La Leche League -
evening group
2nd Friday of the
month
6:30 pm
JP Chiropractic office
Leader: Cammy Mills

Poulsbo
La Leche League
1st Wed of the month
10:00am
Olympic Evangelical
Free Church,
Leader: Ashia
360-779-4033

Port Orchard
La Leche League -
daytime group
1st Tues of the month
11am to noon
589 Bethel Ave
Leader: Kendra Machen
360.874.1689

Breastfeeding Support of
Bainbridge Island
Mommy & Me Tea
Cups Espresso
9:30-11 am
for dates check
www.facebook.com/events/2038882729720835/



www.mothershipbirth.com

**Your are not alone
Find your village**

Online resources

www.kellymom.com

www.lli.org



For more local parenting
resources check out

Peninsula Birth Network

www.peninsulabirthnetwork.org